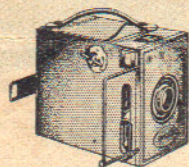


CLOSE UP or DISTANCE— it's all the same to an ALL-DISTANCE Ensign

Simplicity and Certainty are the keynotes of the All-Distance Ensign.



Every 8-exposure film will give you eight sharp and well-exposed negatives.

There are no fuzzy pictures with the All-Distance Ensign.

If its a "close up" shot at three feet, or a distant view, it's all the same to the All-Distance Ensign, and

there is no fuss or bother in fiddling with gadgets; the patent Lens avoids all this, and you are always sure of splendid prints from your negatives.

The All-Distance Ensign is on sale at all Photographic Dealers.

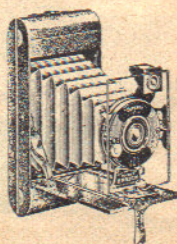
Box Model:

Black ... 25/-
Red, Blue or Brown,
with leather case
to match ... 27/6

Pocket Models:

No. 1, Black 37/6
Red, Blue or
Brown with leather
case to match

40/-
No. 2, De Luxe
Model. Black only
42/-



KEEP THIS FOR REFERENCE

Helpful Hints

Sunshine makes all the difference to a photograph. It lights up the shadows, puts in contrasts, and makes the picture thoroughly pleasing.

Therefore: Take your "Snapshots" when the sun is actually shining, or only lightly covered by clouds.

Don't attempt to make "Snapshots" in Winter or on dull evenings at any time. Make a "Time" exposure.

Don't take "Snapshots" in the shade—bring your subject out into the sunshine, or make a "Time" exposure instead.

Always hold the Camera very still during exposure.

Don't have the sun dead in front of you—preferably it should be to one side or the other, or behind.

When making a "Time" exposure rest the Camera on some suitable support, such as a table, and hold the Camera quite still.

Try and arrange your subjects in front of a pleasant background.

Don't forget to wind your film to the next number after making an exposure.

Detach along this line.

A Booklet *FREE*

Just fill in your name and address on the coupon overleaf, and post to Ensign, Limited, High Holborn, London, W.C.1. You will then receive, quite free, a booklet, printed in colours, all about Ensign Cameras.

Use the
COUPON OVERLEAF