

"J.B. ENSIGN" ROLL FILM CAMERA

Instructions for Use.

The "J.B. Ensign" is a simple daylight-loading Camera for $3\frac{1}{4} \times 2\frac{1}{4}$ pictures.

It is constructed for use with "Ensign-Speedy" Roll Films. Each Spool of Film takes six pictures.

Before loading with a Spool of Film examine the Camera inside and out, place it on a table in front of you.

In the centre of the front you will see the Lens through which the light passes to make an image on the Film.

Two View-Finders are fitted for upright and horizontal pictures. Be careful to allow your subject plenty of room in the Finder. If the light is very bright shade the Finder with the hand, but do not cover the Lens of the Finder.

On the side of the Camera are two bright metal projections, the top one is the *Time Exposure Indicator* and the other is the *Exposing Lever*.

Examine the *Exposing Lever*—it moves to and fro. One movement up (or down as the case may be) as far as it will go releases the Shutter for instantaneous exposure.

For Time Exposures insert the thumb nail under the return edge of the *Time Exposure Indicator* and pull it out as far as it will go. One movement of the *Exposing Lever* (for Time Exposures), either up or down, opens the Shutter and it remains open until the Lever is moved back again.

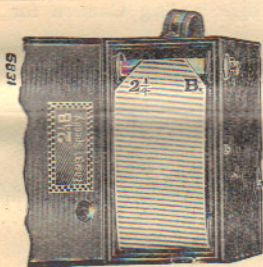
On the top left-hand corner of the side of the Camera is the *Winder Key* for winding the Film after each exposure. Below it is the Catch which fastens the Door at the back of the Camera. To open the Door gently raise this Catch. Except for re-loading purposes never open this Door when a Spool is in the Camera. The Film will be utterly ruined if light reaches it this way.

On opening the Door you will see a recess at top and bottom. They are the *Spool Chambers*. The one at the bottom takes the new unexposed Spool, the other holds the empty Spool which receives the used portions after each exposure. It can be revolved by turning the *Winder Key*, which will turn one way only.

TO LOAD. Take a 2 $\frac{1}{4}$ B "Ensign-Speedy" Spool. You will see that one end is slotted. Break and throw away the encircling band, but hold the Spool carefully to prevent the paper unwinding—in which case the Film would be spoilt.

Now place the Spool in the *Spool Chamber* at the bottom. Take particular care when inserting the Spool, that the end with the Slot is on the right so that the paper leads from the back, as in illustration.

Lead the loose end of the paper across the Camera and thread it in the longest slot of the empty Spool, see illustration. Give the *Winder Key* one or two turns to engage the paper. Close the



Door so that the Catch snaps into position. Turn the *Winder Key* slowly until a "hand," preceded by some black dots, appears in the little red window at the back of the Camera. This is a warning. Continue to turn until "1" appears and then stop. The Film is now in position for the first exposure, and after each exposure wind until the next figure appears. After the last (6) has been exposed give about 12 turns to the *Winder Key*.

TO UNLOAD. Open the Door and then continue to wind with your thumb pressed upon the Spool until the free end of the paper comes under your thumb, then stick this end down with the gummed slip attached to it. You thus prevent the paper from running slack and fogging the Film. Disengage the *Winder Key* from the Spool by pulling the Key gently away from the Camera. Remove the exposed Spool for development. Take out the empty Spool from the other Chamber and put it on the Winder side, making sure that the slot is engaged in the Key.

It is now ready to receive Film from a new Spool, which you place in the other side as before.

NOTE.—The Camera should not be less than 10 feet away from the object being photographed. It may be more, in which case the object will appear relatively smaller in the picture. Instantaneous Exposures may be made with the Camera held in the hand, but when taking Time Exposures the Camera must rest on a table or other firm support.

ALWAYS INSIST ON
ENSIGN FILM
SIZE FOR THIS CAMERA IS E20
